

Saw Creek Estates Community Association, Inc.

Fee Based Bulk Dumping Program

Program Expanded- Hours Extended

The dumping of bulk items will be permitted with pre-paid voucher EVERY SATURDAY OF THE MONTH!

(Except Holidays/ Snow Storms)

From 9 am—1 pm!

Procedures:

**YOU MUST PRE-PURCHASE YOUR VOUCHER AT
MEMBER SERVICES TO PARTICIPATE IN THE PROGRAM**

MEMBER SERVICES OFFICE HOURS:

MONDAY- SATURDAY-9 AM -5 PM

FEE SCHEDULE:

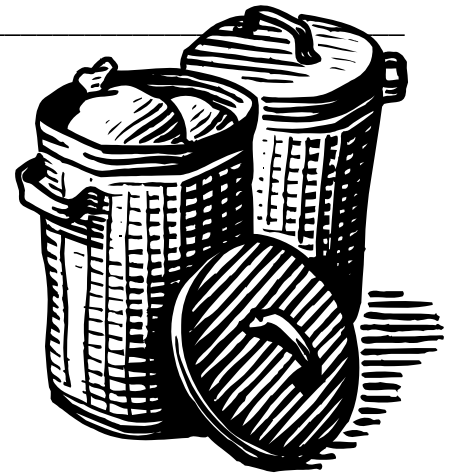
Single Item (small) ~ \$3.00

Single Item (large) ~ \$5.00

Automobile Load~ \$10.00

Pick up truck/Van/SUV~ \$20.00

Panel Truck/ utility Trailer (up to 8' in length) ~ \$30.00



Materials that will NOT be accepted:

Automobiles, tires, batteries, paint cans with contents, thinners, pesticides, herbicides and any other hazardous materials, of any kind, or appliances with Freon, Building materials and demolition waste (i.e.: lumber, shingles, sheetrock, dirt, cement, stumps, branches, etc.)

Residents are responsible for unloading their own vehicles

**CLEAN UP IS FOR ALL SAW CREEK RESIDENTS IN GOOD STANDING
CURRENT HOMEOWNER/ RENTER PHOTO ID CARD IS REQUIRED.**

